

Bayline

RASHID YACHTS & MARINA

EMAAR  MINARASHID



Rashid Yachts & Marina

Rashid Yachts & Marina is the new global destination for discerning yacht owners to experience Dubai's buzzing scene in an elegant environment where beauty and luxury collide.



Where Elegance Anchors in Dubai's Heart

Designed to encapsulate the ultimate modern waterfront architecture, it combines luxury residences and a full-service marina with an appealing mix of restaurants and shops.



Generous Promenades



Hospitality on the Water



QE2 Hotel



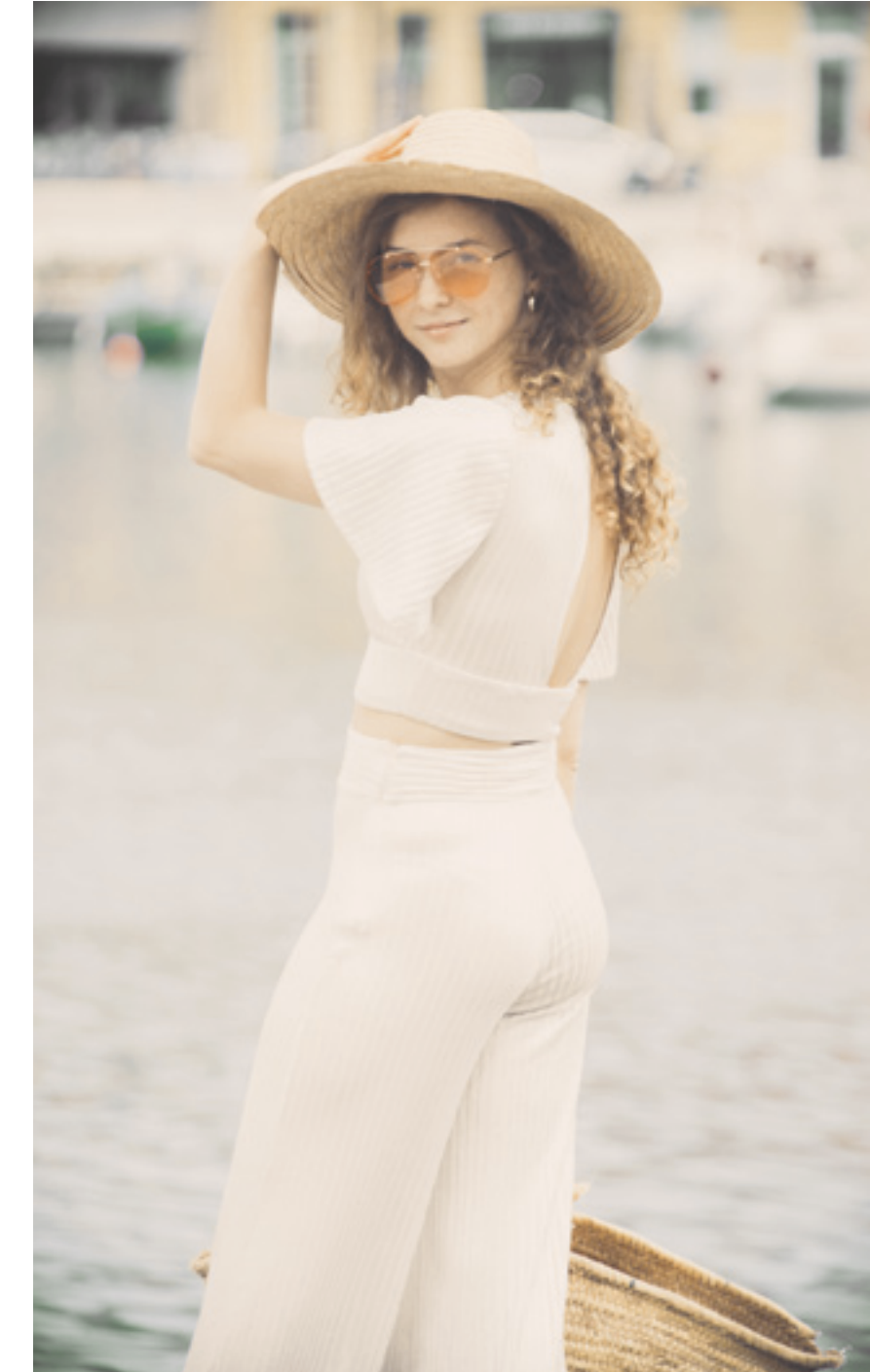
Private Beach Club

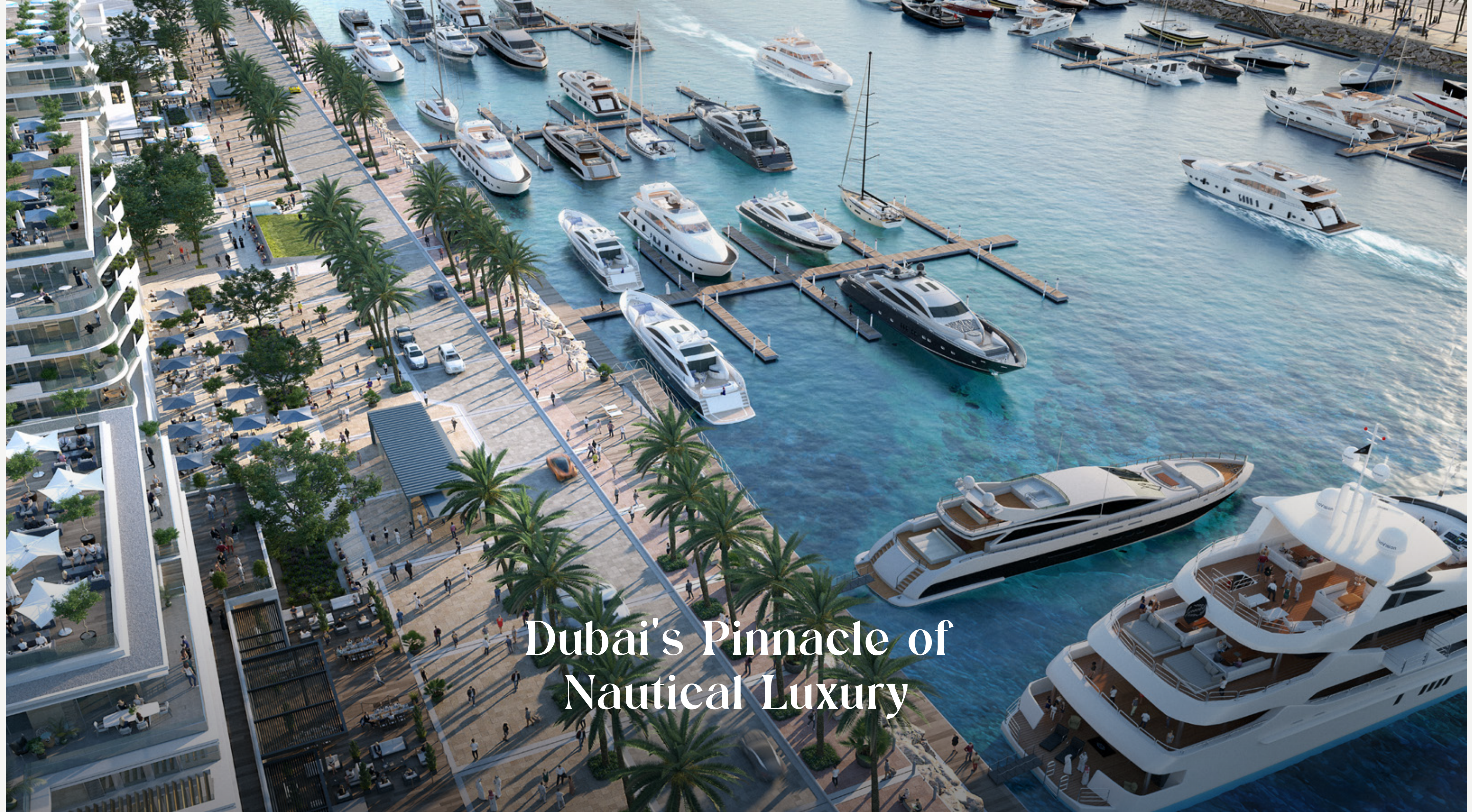


Signature Hotels



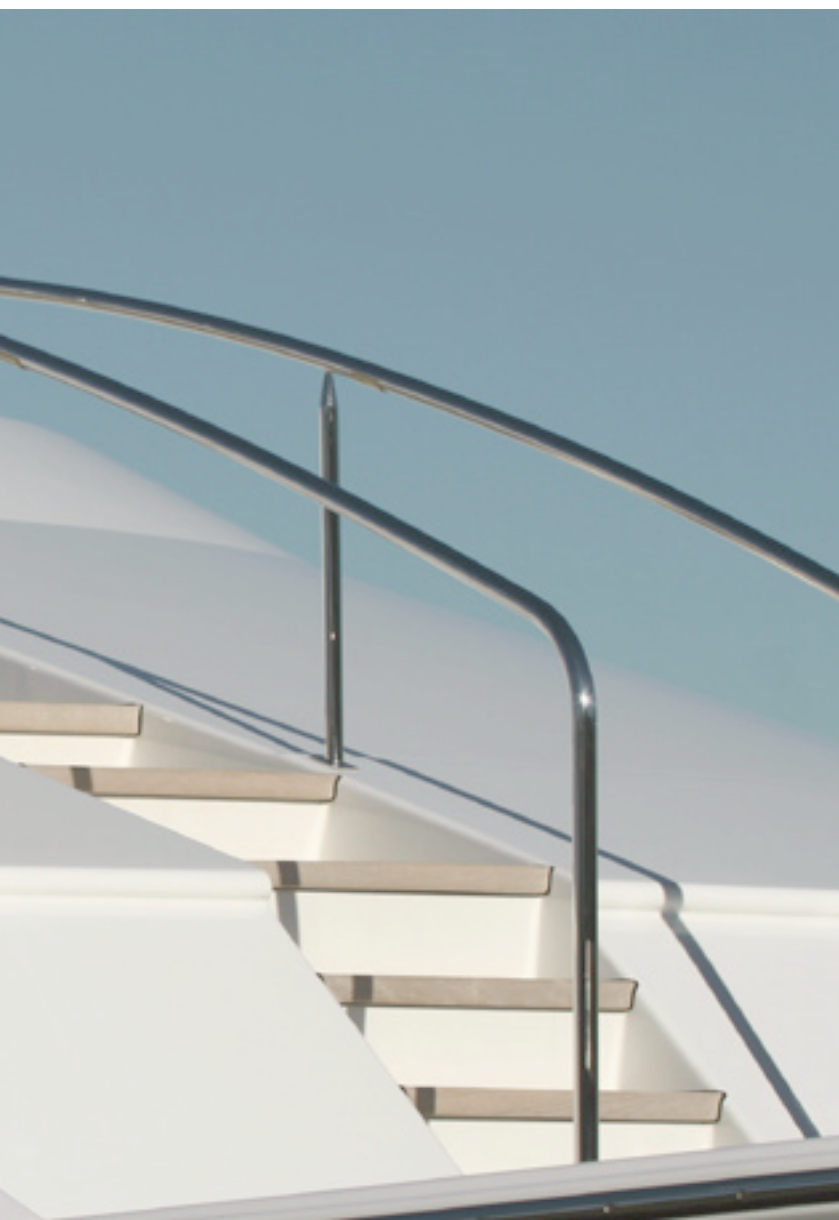
World-Class Superyacht





Dubai's Pinnacle of
Nautical Luxury

World-class Super Yacht Hub



The new Marina at Rashid Yachts & Marina offers convenient, hassle-free access to Dubai, accommodating 430 wet berths for yachts up to 100m long with a range of flexible berthing options, from a single night through to seasonal and annual stays.

You will benefit from the Marina's state-of-the-art facilities, an expert, multilingual marina team offering yacht assistance around the clock, and a host of amenities and services you will find at your disposal.

- 430 Wet Berths
- Flexible Berthing Options
- For Yachts Up To 100m Long
- Floating Yacht Club





Rashid Yachts & Marina's
Epicenter of Elegance



In the Heart of it All

A luxurious residential haven with modern amenities, beautiful scenery, and access to exciting local hotspots, Rashid Yachts & Marina is the perfect place to relax and explore in proximity to some of Dubai's most exciting attractions.



Downtown Dubai



Dubai Mall



Dubai Museum



Al Sabkha Gold Souq



Dubai Int'l Airport



Heritage Village



Perfectly Connected



20 min from Dubai Int'l Airport

22 min from Downtown Dubai

22 min from Al Sabkha Gold Souq

32 min from Dubai Marina



A Thriving Promenade

During the day or long after the sun dips beyond the sea's horizon, the Promenade is the essence of the Marina's thriving life with a rich variety of dining options and an eclectic selection of stylish shops that will accommodate your every need.



Venetian Piazza



A Floating Restaurant



Interconnected District Parks



View of Burj Khalifa & The Sea



Pedestrian Harbour Bridge



Luxury Hotels





**Indulge, Explore,
and Rediscover
Dubai's Allure**



Shopping, Dining & Inspiration

When it comes to retail therapy, nobody does it better than Dubai. The nearby Downtown Dubai is a famous shopping district in Dubai, and it is filled with hip stores that cater to your every whim. Restaurants, cafes, lounges, and beach bars can all be found floating in Rashid Yachts & Marina's Promenade, whereas in Dubai's Downtown, you'll find the city's best restaurants and nightlife options, all within easy walking distance.

Located in one of Dubai's oldest neighbourhoods, every day brings fresh inspiration, thanks to the proximity of several cultural institutions including a theatre, a museum, and the former residence of Sheikh Saeed Al Maktoum.



Welcome to Bayline



Luxurious Tranquility Amidst Dubai's Charm

Imagine waking up to the gentle sound of nature, basking in the Dubai sun, and knowing you're at the heart of it all.

Nestled within Rashid Yachts & Marina, Bayline stands as an emblem of modern luxury, seamlessly woven with the serene charm of waterfront living and Dubai's rich cultural allure. Designed with an eye for the sophisticated homeowner, Bayline embodies a perfect fusion of opulence, convenience, and nature's tranquility.

**Your Oasis of Opulence
in the Urban Expanse**



Resort-Style Living in the Heart of the City

Bayline ensures that every day feels like an escape from the ordinary. Dive into the expansive central pool, designed to reflect the ambiance of the world's finest resorts. The surrounding landscaped parks offer an oasis of calm, ensuring a balance between urban life and nature's tranquility. A leisurely stroll away, the Marina Promenade awaits, presenting a curated selection of retail and dining experiences to complement every occasion.



Every Day, An Escape into Extravagance





Panoramas that Captivate and Inspire

Residents at Bayline are treated to a visual feast from dawn till dusk. Sweeping views encompass the tranquil sea, the vibrant Central Pool, and the iconic silhouette of Dubai Downtown, offering a dynamic juxtaposition of natural beauty and urban sophistication.



A Harmony of Nature and Modernity

Perfectly positioned near the Central Plaza, Bayline is a perfect melding of nature's beauty and urban conveniences. The terraces interspersed with verdant green pockets ensure every outdoor moment becomes a cherished memory, fostering community ties and individual reflections alike.



Where Green Bliss Meets
Urban Brilliance





**Iconic Dubai,
Right on Your
Doorstep**



Dubai's Landmarks, A Stone's Throw Away

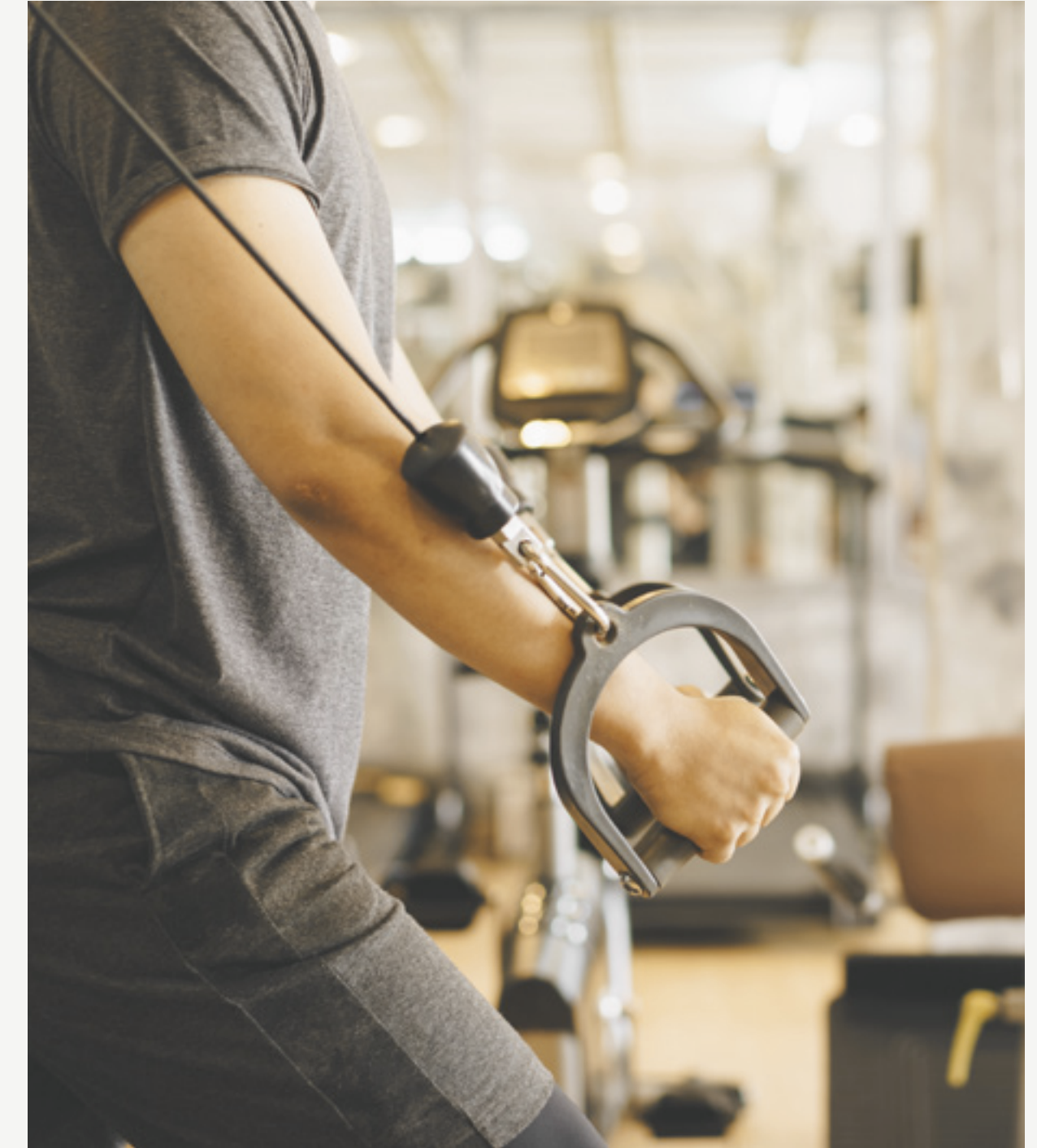
Being a Bayline resident means having unparalleled access to Dubai's most iconic spots. From the rich history of Port Rashid and the rejuvenating Central Canal Pool to the commercial hub at the Dubai World Trade Centre, you're always amidst the action.

Crafted Amenities, Curated Experiences





A World of Choices Tailored to Your Lifestyle



At Bayline, amenities are crafted for the discerning resident. Whether revitalizing in the state-of-the-art gym, engaging in a spirited tennis match, or unwinding by the luxurious pool, every choice enhances your living experience. And with dedicated parking spaces, convenience is at the forefront.



Swimmable Canal Pool



Gym



Splash Pad



Community Park



Boardwalk Promenade



Retail & Dining Options





Architectural
Brilliance, Dubai's
Modern Legacy



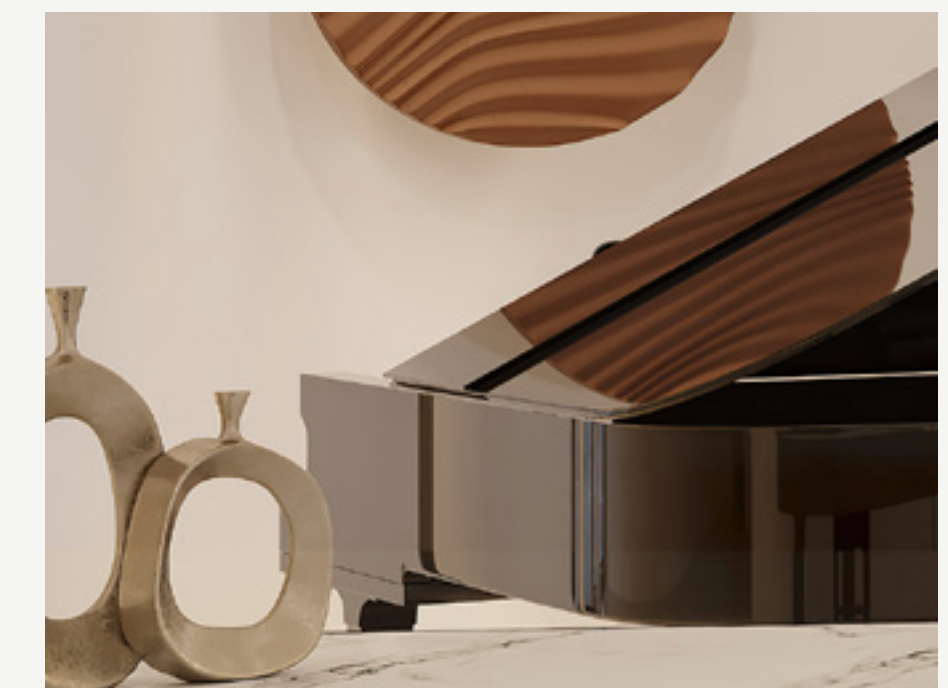
A Testament to Contemporary Elegance

Bayline's architecture artfully bridges the gap between time-honoured elegance and contemporary design finesse. By harnessing authentic, locally-sourced materials, this development not only pays homage to but also revitalizes Dubai's illustrious architectural legacy, infusing every corner with a blend of the city's historic grandeur and the innovation of the present.



Spaces Crafted with Precision and Care

Bayline offers a diverse array of residences, each exuding its own unique charm. The 1-bedroom apartments are perfect for individuals or young couples, offering spacious living areas, open kitchens, and balconies to soak in the views. The 2- and 3-bedroom apartments expand the luxury with master en-suite bathrooms, walk-in wardrobes, and additional balcony access.







Residences that Resonate with Refined Tastes

For those seeking an elevated experience, the 3-bedroom duplex units offer two expansive levels of living space, complete with terraces, maid's rooms, and storage closets, ensuring every need is catered to.

Global Lifestyle Developer



EMAAR

As one of the most valuable and reputable real estate developers in the world, Emaar aims to provide world-class design and unrivalled products in the most desirable locations. The Group's portfolio consists of large-scale integrated residential developments, shopping malls, hotels, entertainment, and leisure destinations. Some of Emaar's most iconic landmarks include Burj Khalifa, the world's tallest building.

51.8 Bn AED
Market Cap - FY 2022

85,000
Residential Units Delivered

24.9 Bn AED
Revenue as of Dec. 2022

12+
Global Market Presence

6.8 Bn AED
Net Profit - FY 2022

27,000
Residential Units Currently Under Development

* As in 31 December 2022

Bayline

RASHID YACHTS & MARINA

EMAAR  MINARASHID